



ACCESS GUIDE

Time to Kirishima

From within Kagoshima city limits by car ...approx. 1hr 30min
 From Miyakonojo (by car)approx. 40min
 From Miyazaki by carapprox. 2hrs
 From Hitoyoshi by carapprox. 1hr 30min

Distance and Time from Each IC to Kirishima Shrine

Airport IC 25.5kmapprox. 40min
 Yokogawa IC 26.0kmapprox. 45min
 Kurino IC 31.0kmapprox. 45min
 Ebino IC 36.0kmapprox. 1hr 10min
 Kobayashi IC 39.0kmapprox. 1hr 15min
 Takaharu IC 23.0kmapprox. 40min

Time by Car

Kirishima Shrineapprox. 5min
 Kirishima-Jingu Stationapprox. 20min
 Takachiho-Gawara Visitor Centerapprox. 25min
 Kirishima Hot Springs Areaapprox. 15min

Kirishima Roadside Station **Shinwa no Sato Park**

2583-22 Kirishima Taguchi, Kirishima, Kagoshima ☎0995-57-1711
 Hours: 9:00AM-5:15PM (Spring/Summer) 5:00PM (Fall/Winter) Open Year Round

*Rides closed 1 week between May and June due to maintenance.

*Restaurant closed December 30 and 31.

Website: <http://www.shinwanosato.jp>

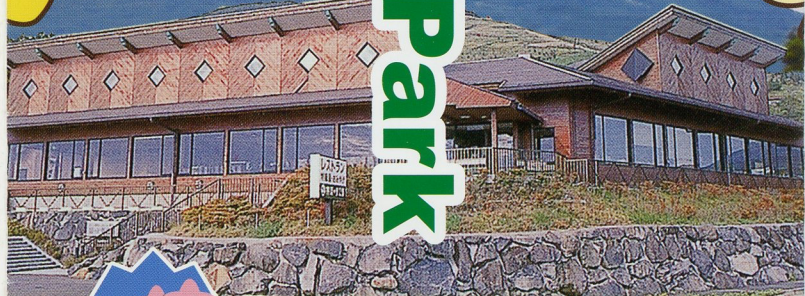
Admission and
parking are free!



Shinwa no Sato Park

Kirishima's Nature Panoramic Park

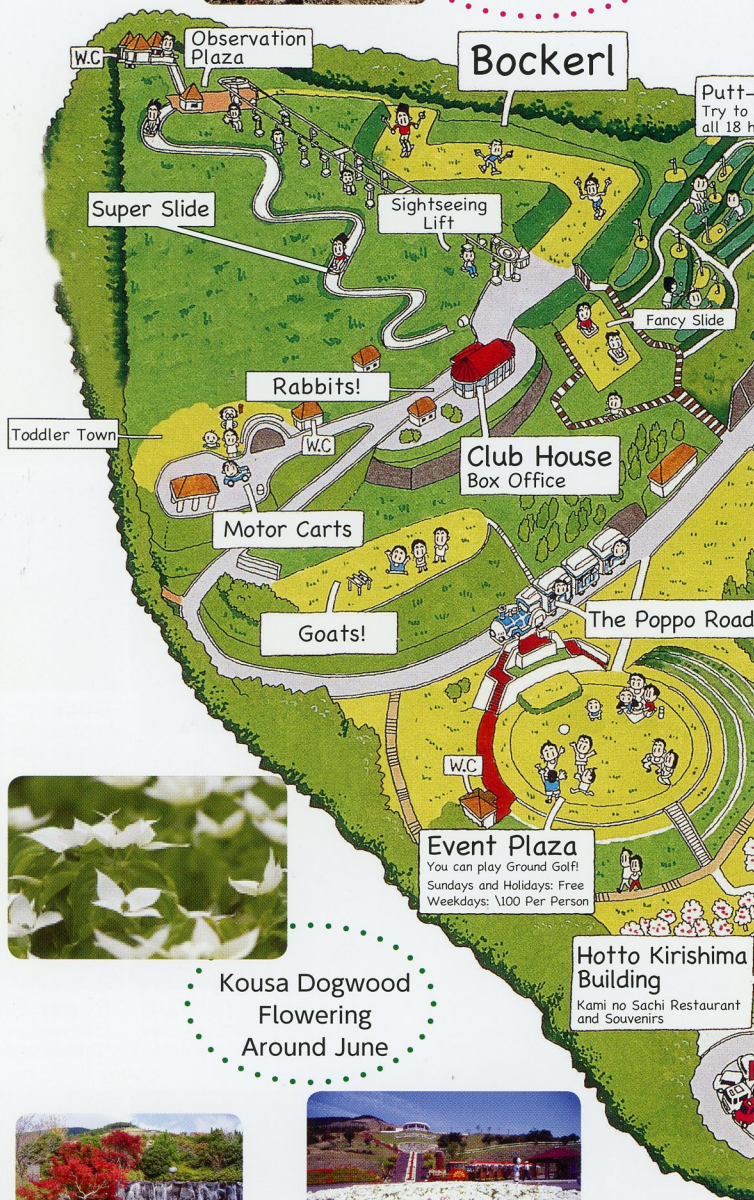
See!
Play!
Eat!



**Kirishima Roadside
Station**



Cherry Blossoms
End of March to
Beginning of April



Kousa Dogwood
Flowering
Around June



Autumn Foliage
October-November



Azaleas
Mid-April to
Beginning of May

We have many restaurants,
souvenir shops, observatories,
and rides!



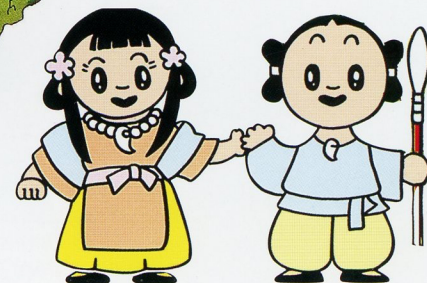
Myth Museum

A movie hall that can accommodate 50 people.
Learn about Japanese myths through a 20min animation.

Free Rest Area

The hill where you can see the wind

Here you can see not only
Kirishima's mountains, but
also Mt. Sakurajima and
Kinko Bay!



Play
Have fun in nature!

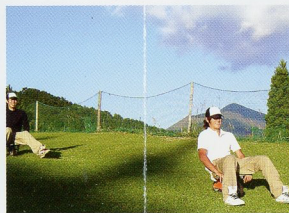
Have a fun-filled day in nature.



Ryoma and Oryo Cutouts



Sightseeing Lift Summit



Bockerl

¥700 per person per time (30min)
Comes with 1 one-way lift ticket



Poppo Train

¥200 per person each way
Children under 4 are free



Fancy Slide

¥500 per slide (1hr)
Track is 40m long



Super Slide

¥500 per person
*Comes with lift ticket



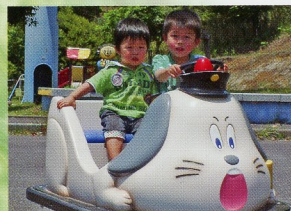
Sightseeing Lift

¥500 per person both ways
Children under 4 are free



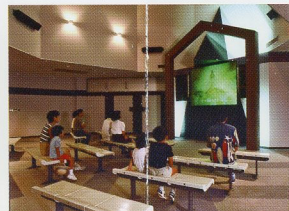
Putt-Putt Golf

¥600 per person
18 holes



Motor Cart

¥100 Per Person

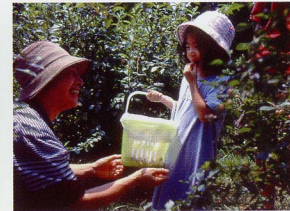


Myth Museum Movie Hall

¥200 for elementary school-aged and over
Runtime: Approx. 20min



Toddler Town



Blueberry Garden

Free admission
(Season runs from mid-July to late August)

Shopping

Kirishima's Vast Souvenir Offerings

Made with blueberries from this park!

- Handmade Blueberry Ice Cream ¥350



Made with Blueberries from this Park!

Natural taste

- Blueberry Juice (500ml) ¥1,545



● Blueberry Picking Season
Mid-July to Late August



- Blueberry Jam (180g) ¥775 (100g) ¥435



- Sho-chu



Filled with Kurobuta Pork!
● Tappuri Kurobuta-Miso (180g) ¥570 (100g) ¥360



- Persimmon Vinegar Ponzu (300ml) ¥385
- Moridore (Sesame Dressing) (300ml) ¥385
- Handmade Miso (1kg) ¥450
- Yubeshi (250g) ¥290



- Barbecue Sauce (340ml) ¥440
- Men-Tsuyu (Noodle Sauce, Seasonal) (300ml) ¥390



- Yuzu Miso (150g) ¥290
- Bonito Miso (100g) ¥290
- Persimmon Vinegar Kombu (150g) ¥370



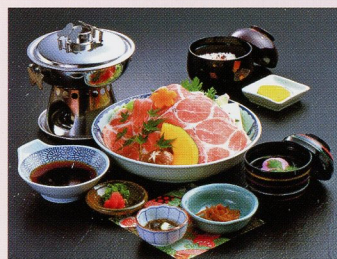
- Original keyring ¥540



Kami no Sachi Souvenirs

Gourmet

Delicious Foods Made with Natural Ingredients



- Kirishima Kurobuta Pork Shabu-Shabu Set ¥1,650



- Ryoma-nabe (Only 10 Served Per Day) ¥1,240



- Kirishima Kurobuta Pork Katsu Curry (with Salad) ¥1,140



- Kirishima Kurobuta Pork Tonkatsu Set ¥1,440



- Fried Shrimp Set ¥1,340



- Butanko Noodles ¥670

- Fried Chicken Set ¥1,030
- Kurobuta Pork Udon/Soba ... ¥830
- Shrimp Tempura Udon/Soba ¥930
- Sansai Udon/Soba ¥670
- Kakiage Udon/Soba ¥780
- Zaru Udon/Soba ¥670
- Curry (with Salad) ¥830
- Kid's Lunch ¥830

We serve many more dishes as well!

Come on down and try the delectable Kurobuta Pork from Watanabe Berkshire Farm!



Observation Restaurant

In this spacious restaurant, you can try many delicious foods made from Kurobuta Pork. Has both Western and Japanese-style seats.



We gladly accept reservations for groups as well.