

The Shimabara castle firmly constructed and endured fierce attack by Ikki army.



The History of the Shimabara Castle

It is called "Moritake" and Harunobu Arima established a headquarter at here and defeated Takanobu Ryuzoji army of Saga prefecture. To this auspicious land, Shigemasa Matsukura moved from Gojo (Nara prefecture) and built the Shimabara castle. The construction started in 1618 and it was completed after 7 years. It is said the castle town was maintained at the same time.

The Honmaru, centre of the castle has 5 story castle tower which is "sotofu sonurikome (A story pagoda style and plastered walls.)"

The Ninomaru (second bailey) and the Sannomaru (outer part of the castle) is arranged northwards, and fortify main place by 3 story turret, then outer fence is surrounded by 4 km Nuribe (mud and tile wall topped with tiles) with Yazama (loopholes). It is an excessive castle for 40,000 goku daimyo to have. You can see the profits from trades with overseas from Arima domain era and the enthusiasm of Matsukura as an emerging daimyo. Since then, the Shimabara castle has blazed out as a castle of 4 daimyos such as Matsukura, Koriki, Matsudaira, Toda and again Matsudaira and 19 generations. In the meantime, the castle endured the fierce attack by Ikki army at Shimabara Amakusa rebellion in 1637, and a series of earthquakes and the huge Tsunami at 1792 Unzen earthquake and tsunami.

As the castle was ruined at the Meiji restoration, it was disbursed and dismantled. After that, the effort to the restoration of the castle which is the wish of Shimabara citizen has continued and in 1964 the castle tower was finally restored.

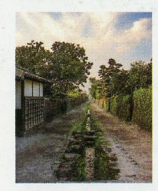
Shimabara Access map



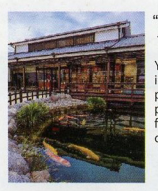
Access

- The Shimabara Port - The Kumamoto Port - 30 min by Kumamoto Ferry, 60 min by Kusyo Ferry
- The Shimabara Port - The Omuta (Miike) Port - 50 min by Fast Ferry
- The Taira Port - The Nagasu Port - 45 min by Ariake Ferry
- Shimabara - Fukuoka - 3 hours by Express bus
- Shimabara - Isahaya - Fukuoka - 50 min by Shimabara railroad (Shimabara - Isahaya) - 105 min by JR Express train (Isahaya - Fukuoka)

Highlights!! The impressive spots in Shimabara



"Bukeyashiki (Samurai residences)"
3 preserved residences; Yamamoto, Shinzuka and Shimada are opened in public with free of charge and you can see the life style of Samurai at that time. The watercourse clear water runs through in the middle of the passage utilised as daily life water at the former domain era and has been preserved.



"Seiryu-tei", Tourism relation Cent
You will find tourism information including Shimabara special quality products of Shimabara city. There is a pond uses abundant spring water in front of the building and colourful carps swim in it.



"Shimeiso", Garden of spring wa
It was built as a private second house at around 1900-1910 and was named as "Shimeiso", because it was surrounded by beautiful scenery. The garden was laid out by monk at around 1930. It is a National Registered Monument and National Registered Tangible Cultural Properties. (Admission fee: Adult 300 yen, Students (elementary, junior and high school) 150 yen)



Shimabara "Yusuikan"
It is a free of charge rest area in "The town of swimming carps". You can have experience of making Shimabara Speciality "Kanzarashi" (charged a fee)

Contact
Shimabara Tourism Bureau
The Shimabara Castle office
1-1183-1, Jyonai, Shimabara city,
Nagasaki prefecture, 855-0036
TEL 0957-62-4766 FAX 0957-73-9766
<https://shimabarajou.com/>

Admission fee	
Adult	¥ 540
Students	¥ 270 (elementary, junior and high school)
Opening hours 9:00-17:30	
Parking fee	
General car	¥ 320
Large bus	¥ 1,080
Small bus	¥ 540

Shimabara Castle

The history stage of hereditary vassals Which has one of the foremost hidden Christian historical materials and went through disturbances twice



1 The castle tower

5th floor

The castle tower and the observation deck

You can see Shimabara city and Mt. Mayuyama, and mountains of Kumamoto prefecture over the sea.

4th floor

Sightseeing and local product section

Specialities of Shimabara city, sister city (Fukuchiyama city and Koda-cho, Aichi Prefecture) and brother city (Bungotakada city, Oita prefecture) are introduced.

3rd floor

The Folklore exhibition

There are displayed plenty of good old days daily essentials ordinary people used.

2nd floor

The local history exhibition

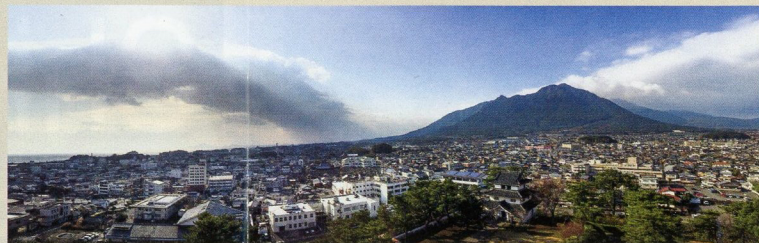
Things related to generations of the feudal lord and the Shimabara Castle including the armour of the Matsudaira family are displayed.

1st floor

The underground Christian exhibition

The most important documents related to the Shimabara Amakusa rebellion are displayed.

5F



The panoramic view with historical town, Shimabara city

3F



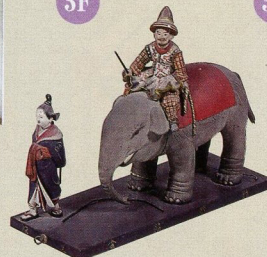
The Bizen ware

2F



The human anatomical chart

3F



An elephant and southern barbarian

3F



The gaslight

1F



The official bulletin board of prohibition

2F



The armour of the feudal lord

2F



The currency of the Shimabara domain

1F



The Coregio altar cross

1F



The statue of goddess of mercy

1F

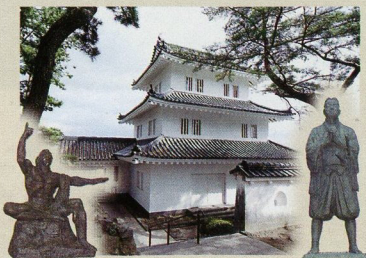


The portrait of Shiro Amakusa

2 The Seibo Memorial Hall (Tatsumi Yagura)

Main 60 works of Seibo Kitamura who is an artist from Shimabara Peninsula and a great master of Japan sculpture association and a receiver of the Order of Culture are displayed. He is a well known artist of the Peace statue in Nagasaki.

Left: the original version of the Peace statue in Nagasaki
Right: the statue of Shiro Amakusa



6 Sightseeing Revival Hall

1F



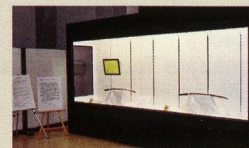
Theater:
15 min short video about Heisei volcanic eruption and its progress runs regularly by 200 inch wide screen at the theatre.
And public lectures and music events are held on an irregularly basis. (capacity 120 pax)

2F

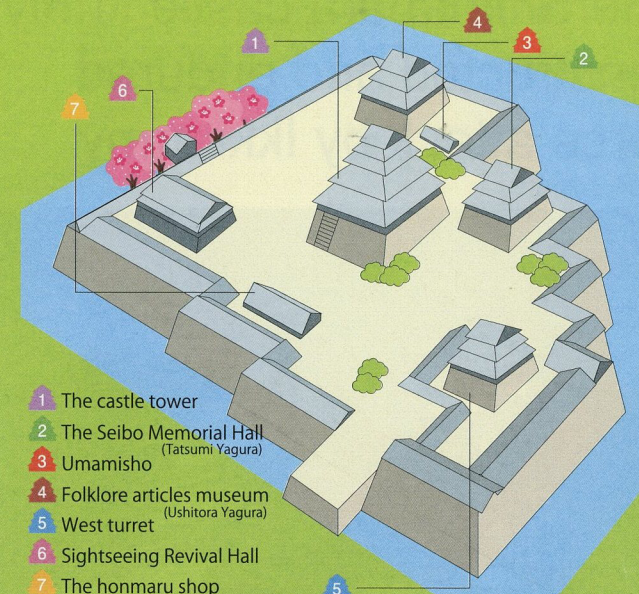


Hinaguri in the castle town - from early February

Exhibition Hall:
It is a space for a special exhibition and seasonal events.



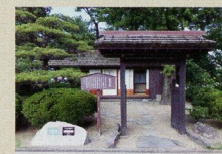
Japanese swords exhibition - from early January



- 1 The castle tower
- 2 The Seibo Memorial Hall (Tatsumi Yagura)
- 3 Umamisho
- 4 Folklore articles museum (Ushitora Yagura)
- 5 West turret
- 6 Sightseeing Revival Hall
- 7 The honmaru shop

3 On Umamisho

It was transferred from Sannomaru (outer part of the castle). It is built at the period of Prince Takakazu Matsudaira, the feudal lord and was used as the place the feudal lord inspects training of feudal retainers. It is a sukiya-zukuri style (a residence style influenced by teahouse architecture) from the Edo period and a registered tangible cultural property.



4 Folklore articles museum (Ushitora Yagura)

Folklore articles donated by local citizens and those remind you of the life from late 19th century to mid 20th century at the area are displayed.



5 West turret

Pictures of castles throughout Japan and the characteristic kokeshi dolls (wooden doll) from each prefecture are displayed. It is a picture spot using the castle tower in the background and uses for events at grass square in the front yard.



7 The honmaru shop

There are variety of souvenirs including Shimabara specialities. The light meals and sweets such as Udon and "speciality Kanzarashi" are served at "teahouse of the castle" in the shop. We are delighted to meet you.

