

Kyushu Ceramics



Hexagonal Jar with Overglaze Polychrome Enamel Design of Flower and Bird (Kakiemon style)



Kraak-style Large Dish with Underglaze Cobalt-blue Design of Phoenix (VOC mark)



Tripod Dish with Underglaze Cobalt-blue Design of Heron (Nabeshima ware)
Important cultural property



Water Jar with Ears with Straw-ash Glaze (Chikuzen, Takatori ware)



Sawankhalok-style Vase with Ears in Underglaze Cobalt-blue (Satsuma, Naeshirogawa ware)

Mr. & Mrs. Shibata Collection



Bird-shaped Incense Container, Cobalt-blue Glaze (1630 - 1640s)



Rhombic Dish with Overglaze Polychrome Enamel Design of Boat Fishing (1650 - 1660s)



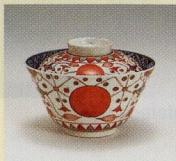
Dish with Underglaze Cobalt-blue Design of Landscape and Geometricized Circle Pattern. (1650 - 1670s)



Dish with Underglaze Cobalt-blue Design of Iris (1670 - 1690s)



Lobed Dish with Overglaze Polychrome Enamel Design Characterized by the Pine, Bamboo, Plum, and Bird (1670 - 1690s)



Lidded Bowl with Overglaze Polychrome Enamel Design of Jewel String and Red Ball (1710 - 1750s)



Information

Hours

9:00 a.m. - 5:00 p.m.

Entrance until 4:30 p.m.



Closed

Mondays (open if a Monday falls on a national holiday)

December 29 - 31



Admission free

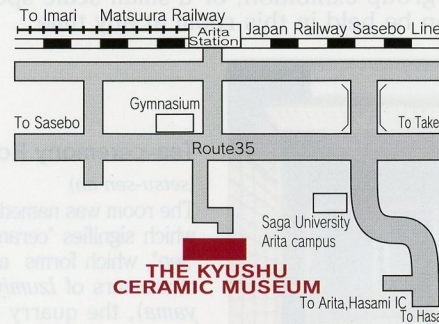
(provided that an admission fee fixed each time is charged during a special exhibition)



Access

- JR Sasebo Line : get off at Arita Station, twelve minutes walk
- Nishi-Kyushu Expressway : five minutes drive from Hasami Arita IC
- Free Parking Lot : capacity of 300 cars

Location



〒844-8585, Toshaku Otsu, Arita-cho, Nishimatsuura-Gun, Saga-Ken, Japan
 TEL 0955-43-3681 FAX 0955-43-3324
 URL : <http://saga-museum.jp/ceramic/>
 E-mail : kyuto@pref.saga.lg.jp



佐賀県立九州陶磁文化館
 THE KYUSHU CERAMIC MUSEUM



The Saga Prefectural Kyushu Ceramic Museum is engaged in the collection, conservation and exhibition of ceramic objects which are important materials in terms of history, arts and industry.

It also spreads ceramic knowledge among the general public as well as conducts research activities and studies on ceramics.



▲ Jar with Underglaze Iron-brown Design of Bush Clover (Egaratsu type)

Old Ceramics of Kyushu (Exhibit Room No.3)

In this room, the viewer is introduced to ancient ceramics produced at various kilns in Kyushu, such as *Kogaratsu* made in Hizen province, early Imari porcelains produced in the Kakiemon style or at the Nabeshima clan kiln.



▲ Dish with underglaze cobalt-blue and Overglaze Polychrome Enamel Design of Rhododendron and Azalea (Nabeshima ware)

Contemporary Ceramics of Art of Kyushu (Exhibit Room No.2)

Various works made by ceramic artists, who represent each prefecture in Kyushu, are exhibited in this room. The viewer can enjoy diverse production techniques and artistic presentation.



This is the room in which the viewer can obtain knowledge of Kyushu ceramics. The history and characteristics of ceramics are shown in detail. The export Imari porcelains exhibited at the Kanbara Collection especially attract public attention.

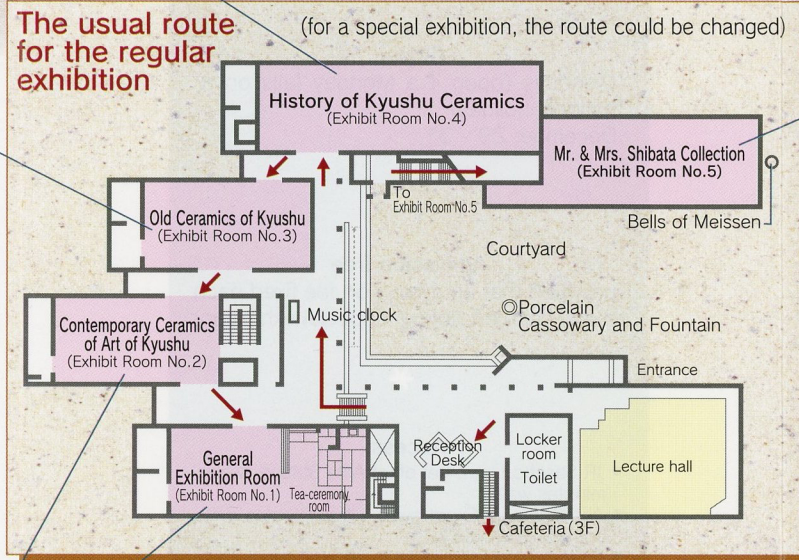


▲ Kanbara Collection (deposited by Arita-cho)

History of Kyushu Ceramics (Exhibit Room No.4)



▲ History of Kyushu Ceramics (Exhibit Room No.4)



Advertised works might not be on display due to exhibit changes

General Exhibition Room (Exhibit Room No.1)

A private or group exhibition, or a small-scale special exhibition can be held in this room at any time.



▲ Tea-ceremony Room

Tea-ceremony Room

(*setsu-sen an*)

The room was named after "Setsu", which signifies "ceramic dish", and "sen", which forms a part of kanji characters of *Izumiyama* (*Izumiyama*), the quarry of porcelain stone used for producing Arita porcelain. *Izumi* can be pronounced "sen". "An" means a monastery.

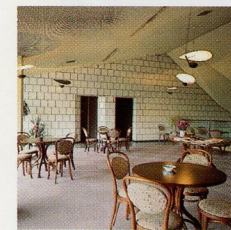
Mr. & Mrs. Shibata Collection (Exhibit Room No.5)

A variety of Edo period (1603 - 1867) Arita porcelains that have been kindly donated to this museum by Mr. and Mrs. Shibata are exhibited extensively in this room, where the viewer can study the historical changes in Arita porcelains. Registered Tangible Cultural Property of Japan.



▲ Mr. & Mrs. Shibata Collection (about 1000 pieces on display)

The Other Facilities



▲ Cafeteria (3F)

▼ Music clock box mechanism made of Arita ware

